

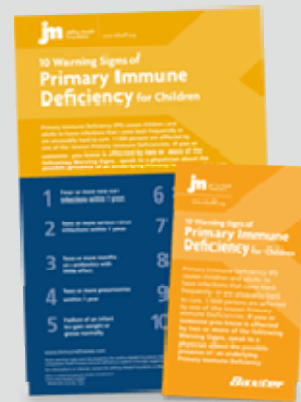
New: *The 10 Warning Signs of PI for Children* Poster and Pocket Guide

Help others learn about the symptoms of PI with this updated version of *The 10 Warning Signs of Primary Immune Deficiency for Children*, developed by the Jeffrey Modell Foundation. The poster and pocket guide recommend talking to your doctor if a child has two or more of these signs:

- Four or more new ear infections within one year
- Two or more serious sinus infections within one year
- Two or more months on antibiotics with little effect
- Two or more pneumonias within one year
- Failure of an infant to gain weight or grow normally
- Recurrent, deep skin or organ abscesses
- Persistent thrush in mouth or fungal infection on skin
- Need for intravenous antibiotics to clear infections
- Two or more deep-seated infections including septicemia
- A family history of primary immunodeficiency

Share this important information with your friends, family, school, nurse, or physician.

[Order *The 10 Warning Signs of PI for Children* Poster and Pocket Guide](#)



Spanish Version Coming Soon

New: *The 10 Warning Signs of PI for Adults* Poster and Pocket Guide

Adults can be diagnosed with PI, too. The Jeffrey Modell Foundation recommends that you talk to a doctor if you have two or more of these warning signs:

- Two or more new ear infections within one year
- Two or more new sinus infections within one year, in the absence of allergy
- One pneumonia per year for more than one year
- Chronic diarrhea with weight loss
- Recurrent viral infections (colds, herpes, warts, condyloma)
- Recurrent need for intravenous antibiotics to clear infections
- Recurrent, deep abscesses of the skin or internal organs
- Persistent thrush or fungal infection on skin or elsewhere
- Infection with normally harmless tuberculosis-like bacteria
- A family history of PI

[Order *The 10 Warning Signs of PI for Adults* Poster and Pocket Guide](#)



Spanish Version Coming Soon